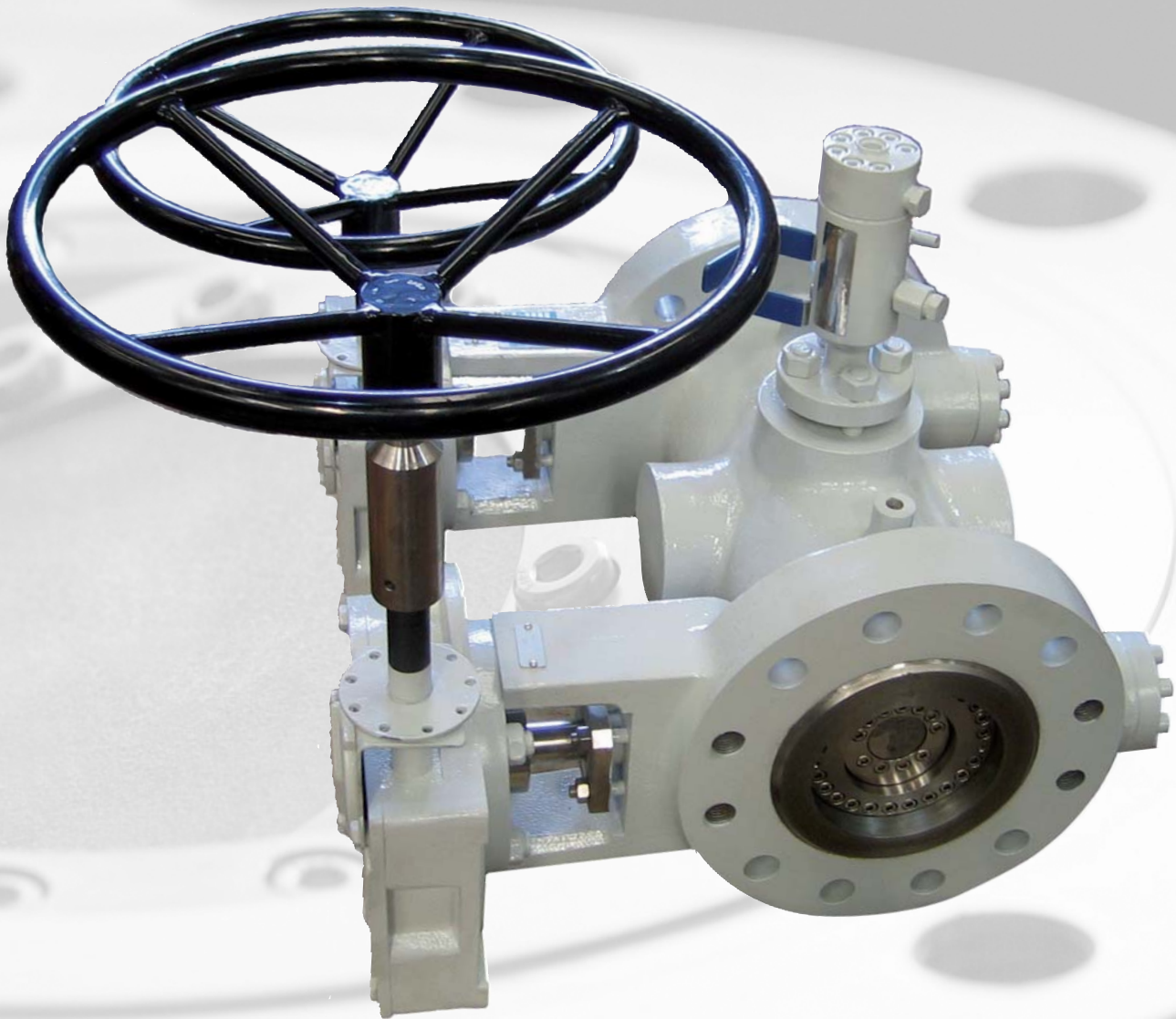


Double Isolation Triple Offset Butterfly Valves



Guaranteed isolation with all the benefits of the Tritec Triple Offset Valve design:

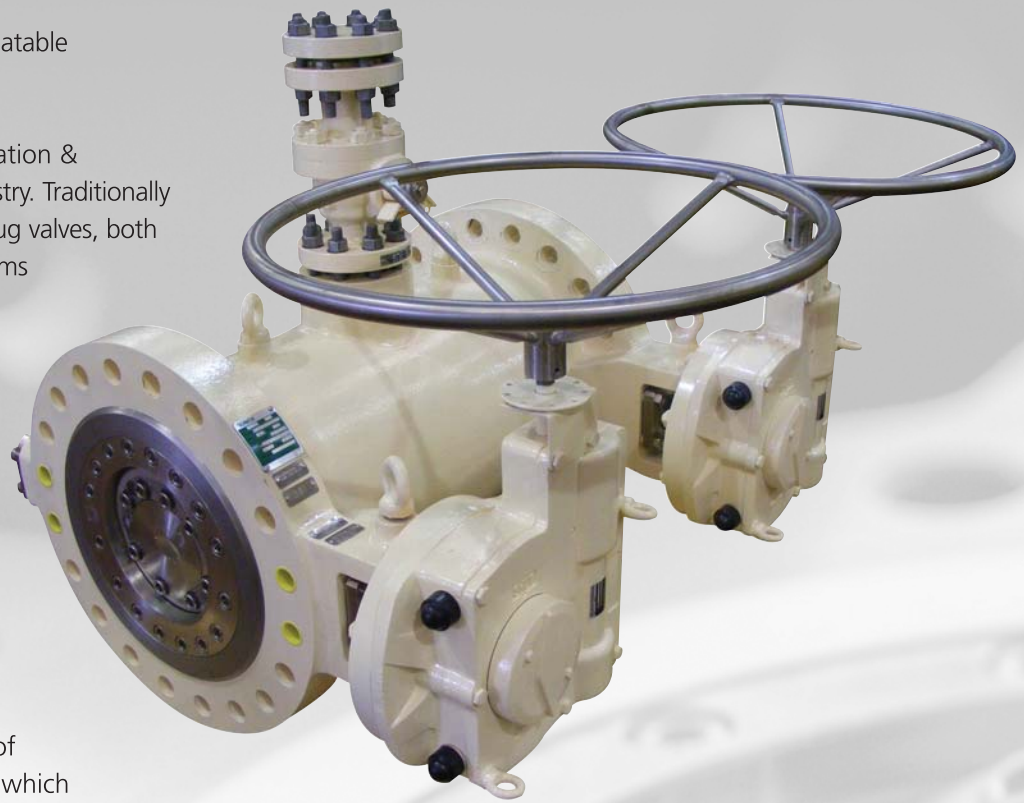
- Positive, Verifiable, Repeatable Isolation
- Firesafe to API 607 / API 6FA / ISO 10497
- Available fully rated to Class 1500lb
- Field Replaceable Seat and Seal
- Available in a wide range of materials
- Customised designs available

The need for positive, verifiable, maintainable and repeatable shut – off in critical applications has led to the wide-spread use of Double Isolation & Bleed valves in the process industry. Traditionally these valves have been ball or plug valves, both of which penalise the user in terms of weight, operating torque, initial material cost and of course maintainability which translates into higher cost of ownership.

Safety initiatives and legislation in the process industry have created the requirement for double isolation during planned and emergency shutdowns.

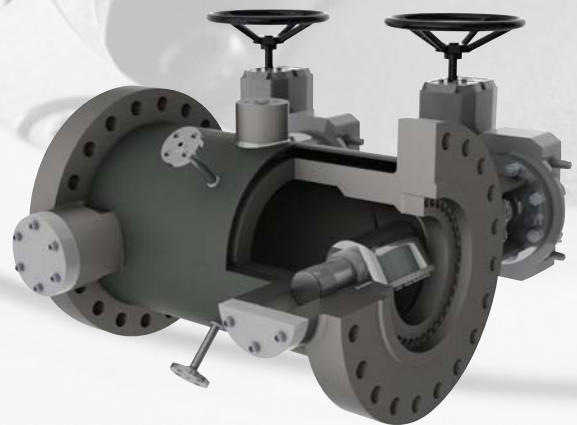
Tomoe has developed a range of Double Isolation & Bleed valves which provide the security of guaranteed isolation while delivering the benefit of the triple offset, metal seated butterfly valve.

Replacing the traditional DBB valves with a double isolating butterfly valve saves time and money. Using the narrow face to face of a butterfly valve, double sealing systems can be supplied within a ball, plug or gate valve face to face with a bleed facility between the two positive seals.

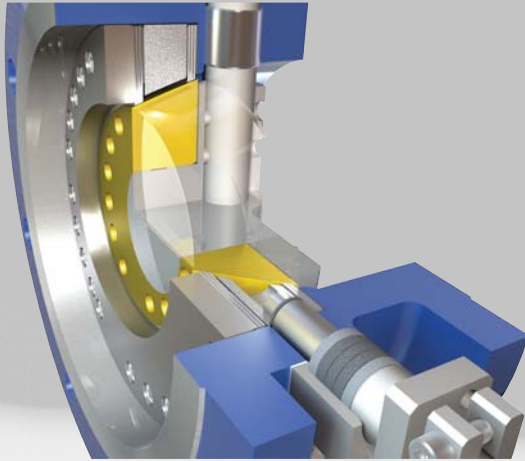


Features of the Tritec Double Isolation Valve

- Positive, verifiable, repeatable isolation
- Sizes: 2in to 60in
- Fully rated to Class 1500
- Field replaceable seat and seal
- Firesafe to API 607 / API 6FA / ISO 10497
- Lower cost of ownership than two single isolating valves
- Available in any material to suit client process conditions
- Fully rated for end of line duty
- Bleed connection to suit client requirements
- End connections to suit client requirements (RF, FF, RTJ, Norsok L-005, Hub end, API)
- Non-standard face to face dimensions available
- One piece cast or forged body thus minimising potential leak paths
- Custom designs to suit client requirements
- Compact design that offers space and weight saving over conventional DBB valve configurations
- Two configurations available that can be adapted to suit client requirements



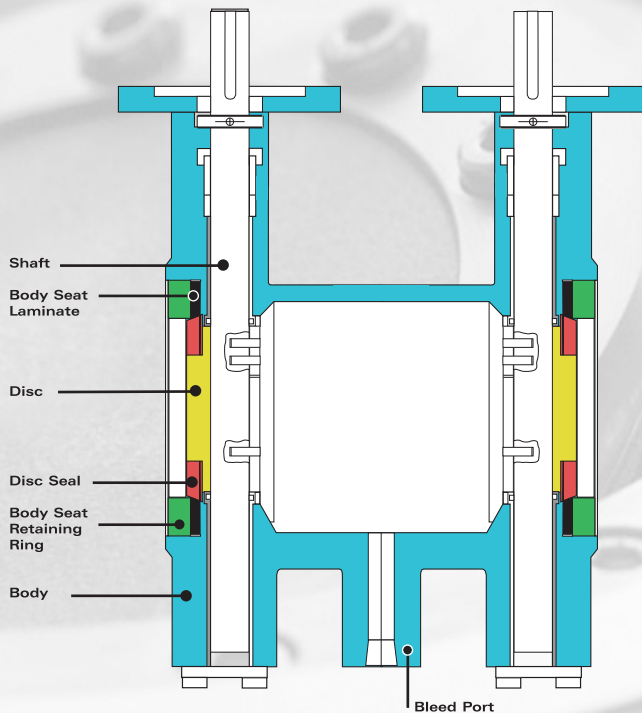
Compact Version (DBB1)



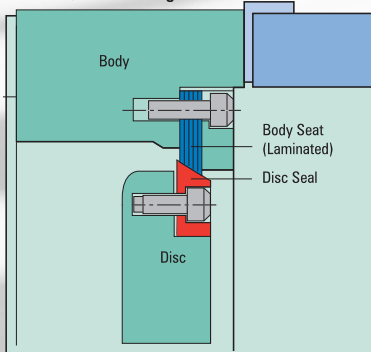
One valve with a unique double seat assembly and integral bleed port.

Bleed cavity is a 'straight through' roddable design to allow for unblocking if required.

Standard Version (DBB2)



Seat / Seal Arrangement



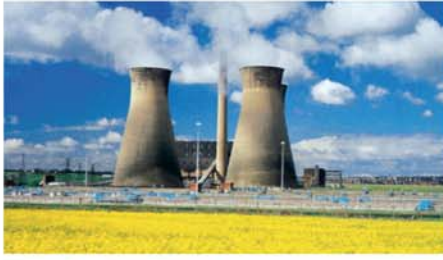
Two standard valves combined into one integral cast body. This eliminates the need for extra joints, gaskets and bolting which in turn reduces potential leak paths. Each disc is independently operated thus providing true double isolation.

Standard face to face dimensions (DBB2)

Valve Size		150LB	300LB	600LB	900LB	1500LB
		Flanged	Flanged	Flanged	Flanged	Flanged
mm	inch	Gate F-F	Gate F-F	Gate F-F	Gate F-F	Gate F-F
50	2	178	216			
80	3	203	282	356		
100	4	229	305	432	457	
150	6	267	403	559	610	705
200	8	292	419	660	737	832
250	10	330	457	787	838	991
300	12	502	502	838	965	1130
350	14	572	762	889	1029	1257
400	16	610	838	991	1130	1384
450	18	660	914	1092	1219	1537
500	20	711	991	1194	1321	1664
600	24	813	1143	1397	1549	1943

- Non-standard face to face dimensions available on request
- Dimensions for sizes not shown available on request

The valve is supplied to match the face to face dimensions of the client's existing valve to enable direct replacement without the need for piping modifications.



TOMOE valves can be found in operation in a vast range of industries worldwide, both onshore and offshore, providing unsurpassed levels of leak tightness and wear resistance and making a valuable contribution to overall process efficiency.

- Water Treatment

- Chemical Processing

- Food & Drink

- Sugar Processing

- Oil & Gas

- Offshore

- Petrochemical

- HVAC

- Power Generation

- LNG

- Iron & Steel

- Marine

- Cement

- Powder Handling

Triple Offset Valve Division

Clearwater Road,
Queensway Meadows Industrial Estate,
Newport, South Wales, NP19 4ST, United Kingdom
Tel: +44 1633 274707
Email: sales@tomoe.co.uk

Rubber Lined, PFA & Double Offset Division

Clearwater Road,
Queensway Meadows Industrial Estate,
Newport, South Wales, NP19 4ST, United Kingdom
Tel: +44 1633 292628 / +44 1633 292629
Email: sales@tomoe.co.uk

Tomoe Valve Co. Ltd

3-11-11 Shinmachi, Nishi-ku,
Osaka 550-0013, Japan
Tel: +81 6-6110-2101 / 2102 / 2103
Fax: +81 6-6110-2105 / 2106
Email: sales@tomoevalve.com

Tomoe Valve Asia Pacific Pte. Ltd

No 2, International Business Park,
The Strategy, Tower 2, #03-27, Singapore 609930
Tel: +65 68995060
Fax: +65 68995061
Email: sales@tomoe.com.sg

Tomoe USA Inc.

15700 International Plaza Dr., Houston,
Texas 77032, USA
Tel: +1 281 258-4000
Fax: +1 281 372-8340
Email: sales@tomoevalveusa.com

TOMOE
www.tomoeurope.com